

A COMMUNITY MISSION





I'M SAM. I'M A STUDENT FROM SPOKANE COUNTY HERE TO TELL YOU ALL ABOUT LAUNCHNW AND THE IMPACT IT WILL HAVE ON MY LIFE. BUT FIRST, LET'S TALK ABOUT HOW WE GOT HERE.

SHARED VISION AND EXPECTATION

Imagine a community coming together to ensure every child has the opportunity and support to access their post-high school education or career of choice and meet their full potential.

This is the bold promise of LaunchNW.

With the promise scholarship as incentive, LaunchNW creates collaboration and provides wraparound supports for students and families. We unite businesses, educational entities, nonprofits, government and communities behind this vision and expectation. A disruption to business as usual, LaunchNW is a transformational investment in the future of our region.

LAUNCHNW IS MODELED AFTER SUCCESSFUL PROGRAMS THAT CAME BEFORE IT.



Say Yes Buffalo

- Pairs a promise scholarship with “cradle to career comprehensive supports” to increase the rates of post-high school completion and the achievement of a fulfilling career.
- Formally announced in 2011 with operations beginning in 2012.
- Collaboration between the Community Foundation for Greater Buffalo, John R. Olshei Foundation and local business leaders.

Reach For The Future

- Founded in 2008 in Spokane by generous individuals, businesses and foundations.
- Provided post-high school education and wraparound supports for two second-grade classes at Lidgerwood Elementary School.
- Achieved life-changing results for students but did not change the system itself.

Just 10 years after implementation in Buffalo, the Say Yes model showed measurable improvements in key job training metrics.

THE LAUNCHNW MODEL WORKS! LET'S TAKE A LOOK AT SOME OF THE NUMBERS.



HIGH SCHOOL GRADUATION RATE

+30%

POST-HIGH SCHOOL ENROLLMENT RATE

+23%

DEGREE OR VOCATIONAL TRAINING ATTAINMENT

+23%



STUDENTS AND FAMILIES IN OUR COMMUNITY FACE BARRIERS TO OPPORTUNITY, EDUCATION AND JOB TRAINING.

The Reach For the Future program also made a huge impact in the lives of Lidgerwood Elementary students and families from two second-grade classrooms.

GRADUATED HIGH SCHOOL OR COMPLETED GED

91%

GRADUATES ACCEPTED TO COLLEGE OR TRAINING

90%

RECEIVED SOME FORM OF POST-HIGH SCHOOL EDUCATION OR TRAINING

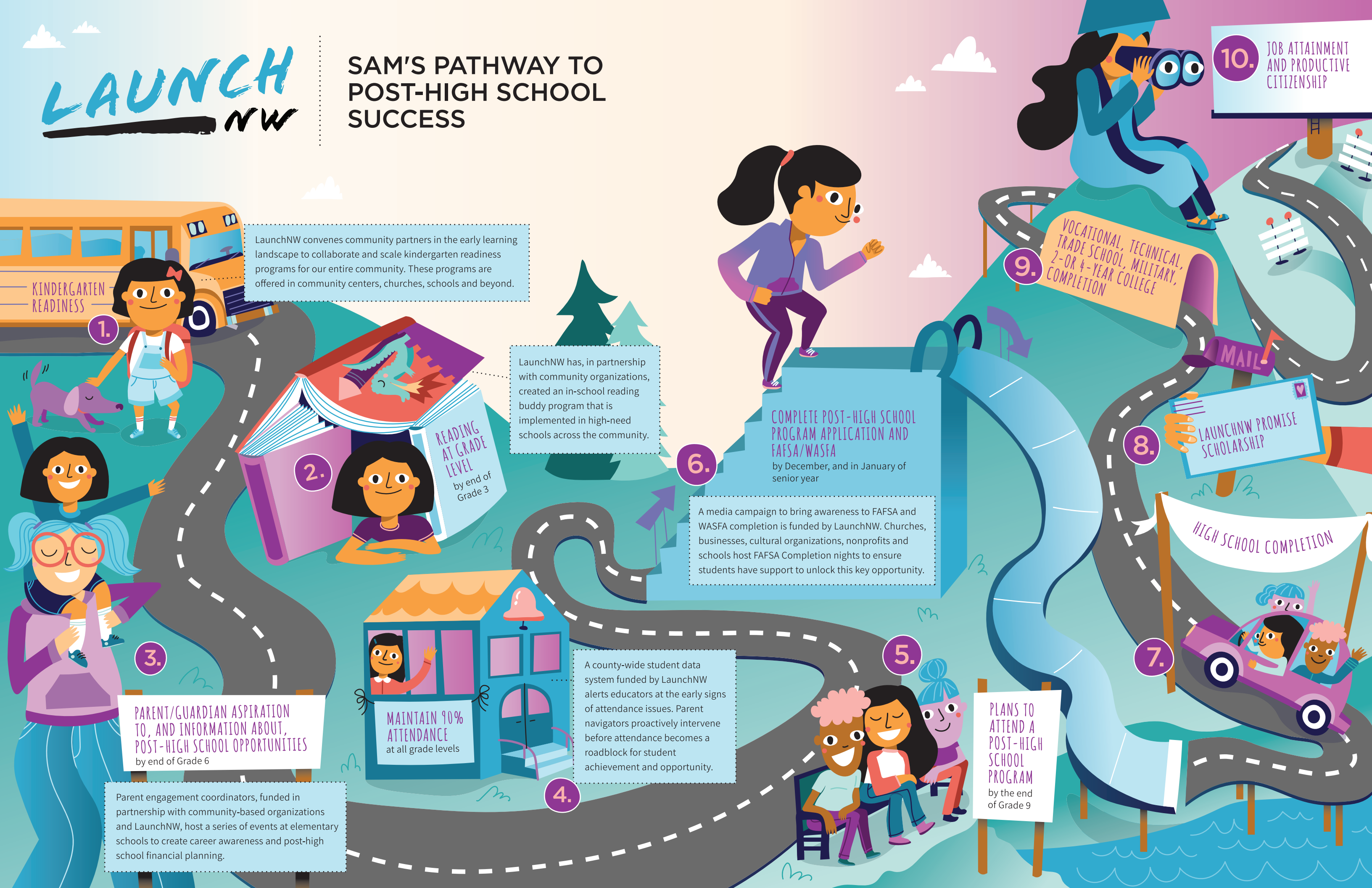
86%

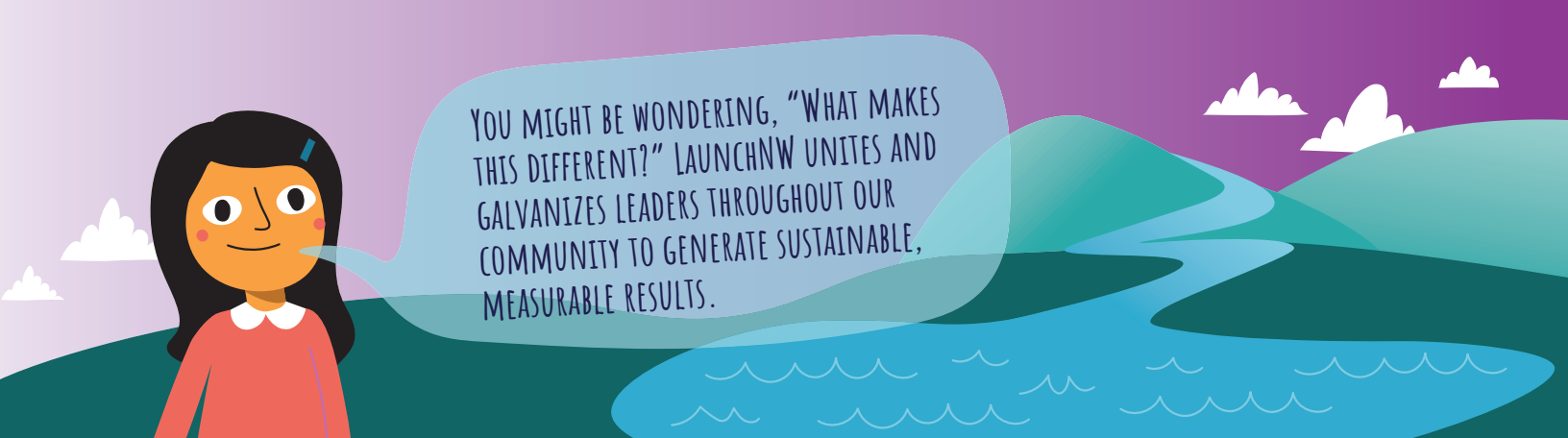
- 1 in 3 families in our region are economically insecure.
- 47% of students in Spokane County are living in poverty. Some districts are as high as 61%. 83% of people born into poverty stay in poverty.
- 74% of people experiencing homelessness in Spokane were already living here before becoming homeless.
- Only 44% of students in Spokane County enter kindergarten ready to learn, including 32% in Spokane Public Schools, the largest district. In Kootenai County, 59% enter ready.
- 74% of available jobs in Washington require some form of post-high school education, but only 39% of Spokane County students complete a degree within eight years of graduating high school. This gap leaves our businesses struggling to fill jobs with qualified candidates.

LAUNCHNW WALKS ALONGSIDE STUDENTS THROUGHOUT THEIR LIVES TO ENSURE THEY ARE SUPPORTED AND EMPOWERED TO REACH THEIR FULL POTENTIAL. ON THE NEXT PAGE, YOU'LL SEE WHAT THAT LOOKS LIKE FOR ME AND MY FAMILY!



SAM'S PATHWAY TO POST-HIGH SCHOOL SUCCESS





FIVE CORE ESSENTIALS

LaunchNW uses five essential philosophies to guide decisions, strategies and operations.

1.

STRATEGIC DATA APPROACH

- Data informs decisions while identifying assets, resources and gaps in supports for students and families.
- Data also helps use existing programs and dollars more efficiently.

COLLABORATIVE GOVERNANCE

- All sectors have a voice in the decision-making of LaunchNW, including leaders from business, nonprofit, government, education, students and community groups.
- A community advisory board provides public visibility.

2.

COMPREHENSIVE SUPPORTS

- LaunchNW coordinates supports for students, utilizing existing and new programs to provide resources along their pathway to success.
- These supports recognize that many non-academic factors influence achievement and opportunity.

3.

SUSTAINABLE FUNDING

- LaunchNW supports and builds upon existing services to break down silos and reduce the duplication of efforts.
- New programs and initiatives implemented through LaunchNW will include a minimum 5-year sustainability plan.

4.

SUSTAINABLE SCHOLARSHIP INCENTIVE

- LaunchNW coordinates supports for students, utilizing existing and new programs to provide resources along their pathway to success.
- These supports recognize that many non-academic factors influence achievement and opportunity.

5.



LAUNCHNW KNOWS MEASURABILITY = ACCOMPLISHMENT.

Data Dashboard

LaunchNW funds a public data dashboard to provide transparency and accountability for the impact of our work, measuring specific metrics and sharing with the community in an accessible format.



EVERY FAMILY, INCLUDING MINE, SHOULD HAVE NO BARRIERS TO THE SERVICES THEY NEED.

Community Asset Map

LaunchNW contracts with Gonzaga University to identify all services offered to our youth and families by nonprofits, schools and cultural organizations. This mapping helps identify redundant programs, underused funding and innovative solutions.



UNITING COMMUNITY LEADERS UNDER A SHARED VISION MEANS EVERYONE BUYS IN.

MOUs

Using the promise scholarship as leverage, LaunchNW sparks collaboration where our community currently works in silos. Partners are required to sign memorandums of understanding (MOUs) to set expectations for data-sharing and implementation. This also eases the funding burden on some of our biggest charitable organizations.

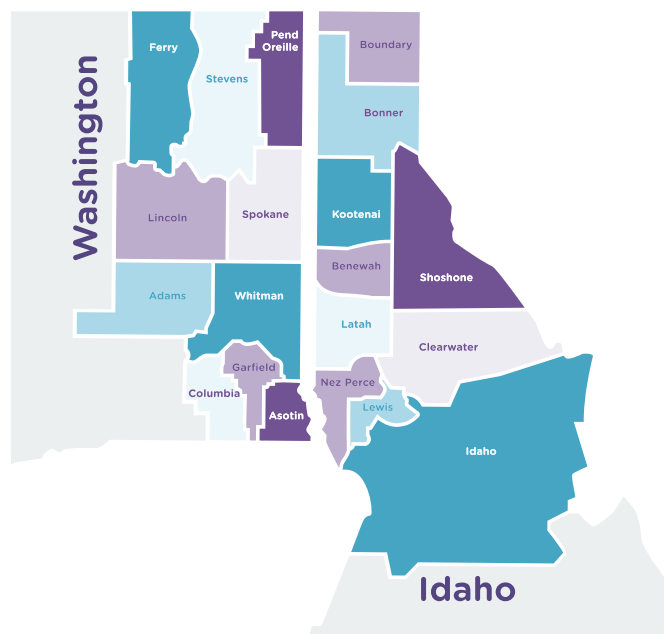


LaunchNW is an initiative born out of the strategic framework of Innovia Foundation.

Join the mailing list and get the latest updates at **LaunchNW.org**.



THE LAUNCHNW PROMISE SCHOLARSHIP WILL FIRST BE AVAILABLE TO STUDENTS FROM SPOKANE COUNTY, WITH CONTINUED PHASED ROLLOUT ACROSS THE REGION.



About Innovia Foundation

Innovia Foundation ignites generosity that transforms lives and communities so that every person has the opportunity to thrive. As the community foundation for Eastern Washington and North Idaho, we partner with people who want to make our world better. We work together to address and solve our region's problems, help those in need, identify and respond to our greatest opportunities and leave a lasting impact. Each year, Innovia Foundation invests nearly \$10 million into our communities through grants and scholarships.

Learn more at **innovia.org**.

509-624-2606
info@innovia.org

818 W. Riverside Ave., Ste. 650
Spokane, WA 99201

